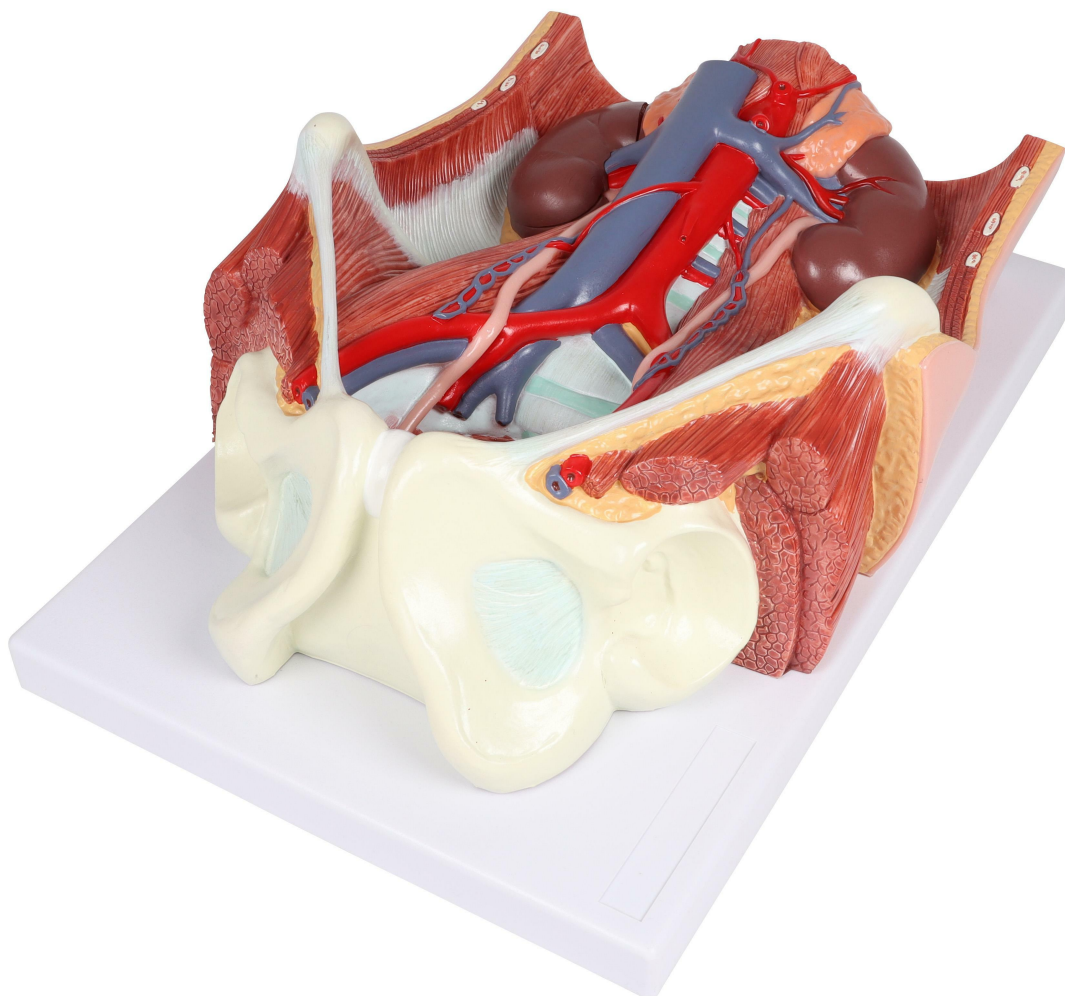


**K569 - Urinary system, dual sex,
6-part**
Order code: **4003.K569**



Cena bez DPH

323,00 Eur

Price with VAT

390,83 Eur

Parameters

Quantitative unit

ks

This dual-sex Urinary System all-in-one model provides a comprehensive view of the urinary system, showcasing the structures of the retroperitoneal cavity, the large and small pelvis with bones and muscles, the inferior vena cava, the aorta with its branches, including the iliacal vessels, the upper urinary tract, the rectum, and the kidney with the adrenal gland. Notably, one front half of a kidney is removable for detailed examination. With interchangeable male and female inserts (bladder and prostate for males, bladder, womb, and ovaries for

females), this anatomical model serves as an invaluable teaching tool, making it an ideal resource for educational purposes. The model is conveniently mounted on a baseboard for easy display and study.