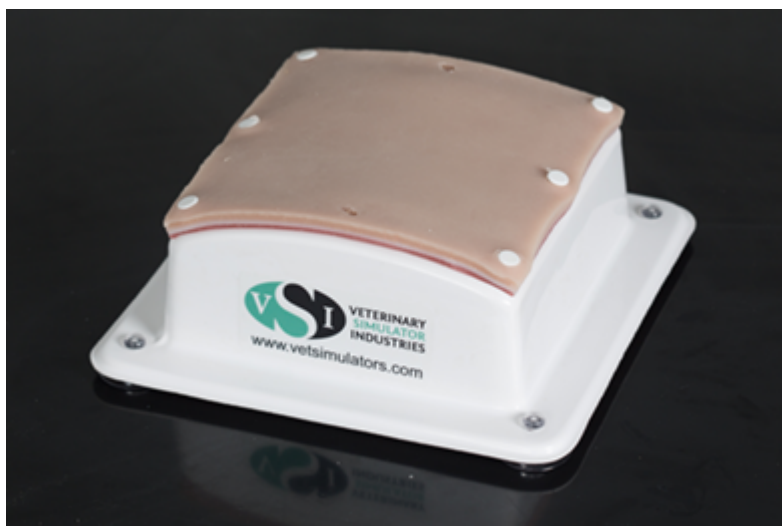


## Suture Training Pads

Order code: **4122.OST001**



Information about product price on demand

### Parameters

Quantitative unit

ks

- Multi layer suture pad
  - Consistes of four layers intended to represent the dermis, subcutaneous, linea and transverse fascia
- Canine multi layer suture pad
  - Feature nipples and umbilicus
  - Consist of four layers intended to represent the dermis, subcutaneous, linea and transverse fascia
- Hollow organ suture pad
  - Consistes of one layer intended to represent a hollow organ
- Suture pad base unit
  - Thermoformed ABS plastic shell with suture pad attachment pins
  - Supplied with two foam inserts. Solid foam insert is for use with the multi layer suture pad. Perimeter foam insert is for use with the hollow organ suture pad. Can be stored on the inside of the base when not in use.
  - Has suction cups that will adhere to smooth surfaces.