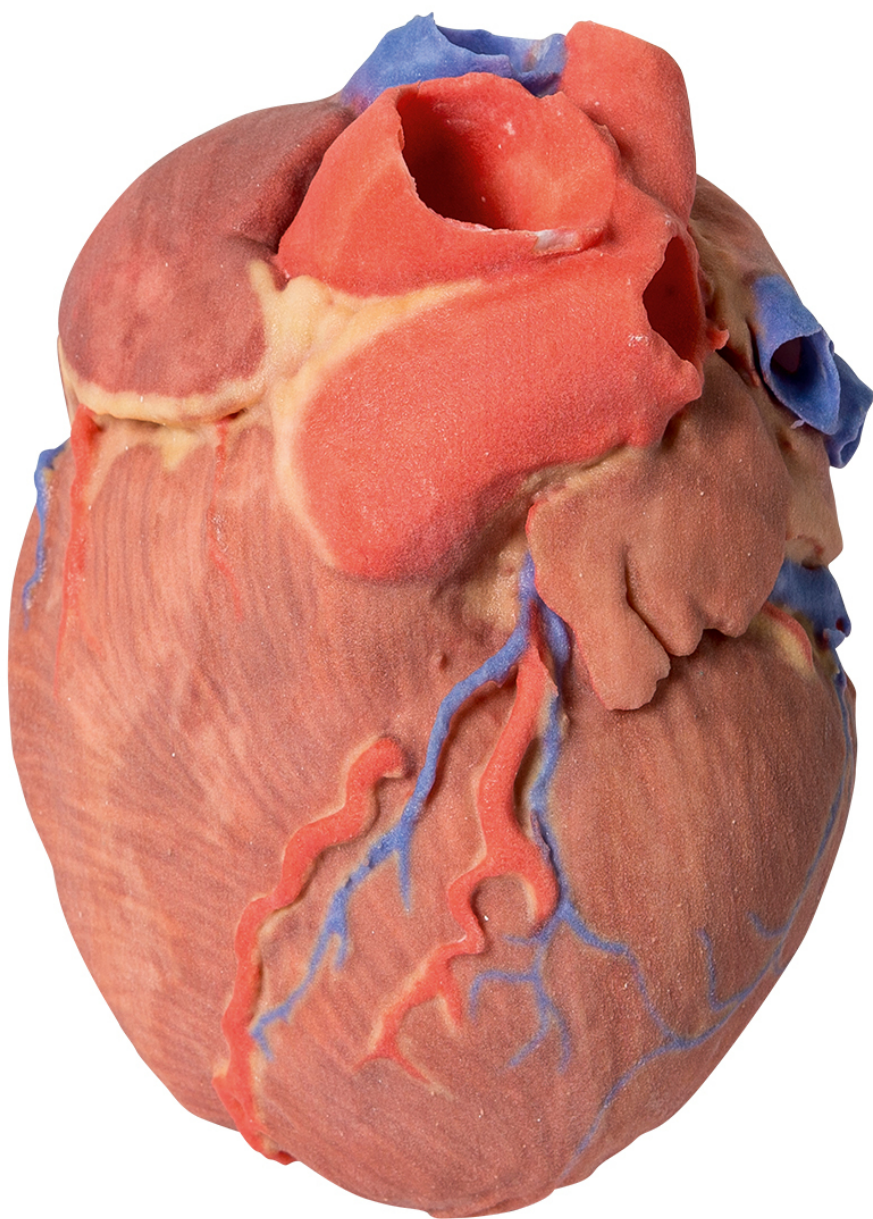




HELAGO-CZ, s.r.o.
Commercial Register maintained by the Regional Court in Hradec Králové
Section C, File 17879
Kladská 1082
500 03 Hradec Králové 3
Company ID: 25 96 39 61, VAT: CZ 25963961
Phone: 495 220 229, 495 220 394
Fax: 495 220 154
GSM gate: 602 123 096
E-mail: info@helago-cz.cz
Web: <http://www.helago-cz.cz>

MP1700 - Heart
Order code: **4003.MP1700**



Cena bez DPH

922,00 Eur

Price with VAT

1.115,62 Eur

Parameters

Quantitative unit

ks

This 3D printed heart specimen preserves superficial cardiac anatomy and the bases of the great vessels. All four chambers (atria and ventricles) are preserved, with the pericardial reflections on the left atrium demarcating the position of the transverse and oblique pericardial sinuses. The right marginal branch of the right coronary artery is visible exiting from the fat-filled coronary sulcus, as well as the posterior interventricular (posterior descending) artery within its sulcus. The anterior interventricular (left anterior descending) and diagonal branches from the left coronary artery are also visible anteriorly, as well as the terminal portion of the circumflex branch deep to the left auricle and great cardiac vein. On the posterior aspect, the coronary sinus receives all the cardiac veins (great, middle, small) and a prominent posterior vein of the left ventricle. The aortic and pulmonary semilunar valves are visible at the bases of the ascending aorta and pulmonary trunk, respectively.