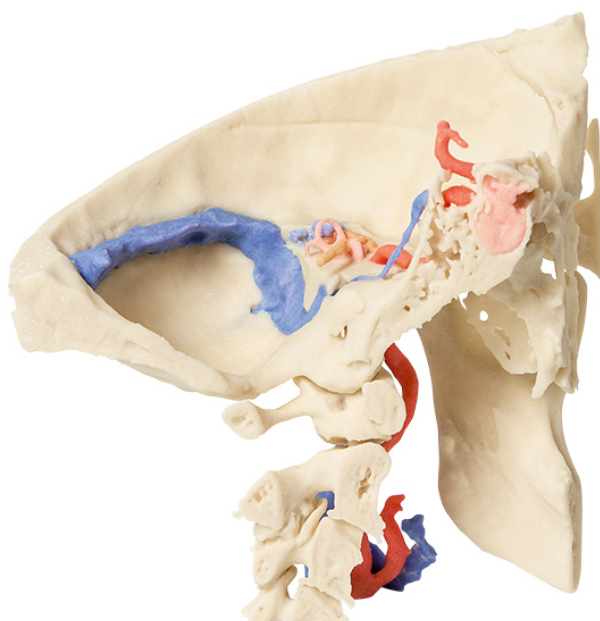


MP1620 - Temporal Bone Model, Set of 3

Order code: **4003.MP1620**



Cena bez DPH

1.831,00 Eur

Price with VAT

2.215,51 Eur

Parameters

Quantitative unit

ks

This 3 part 3D printed model derived from CT data highlights the complex anatomy of the temporal bone including bone ossicles, canals, chambers, foramina and air spaces. In addition, the spatial relations between temporal bone and other structures of otological importance, i.e. carotid artery, dural venous sinuses, related nerves and the dura mater are indicated. Internal casts (endocasts) of the bony chambers and canals have been created to aid visualisation of the internal anatomy of the temporal bone.

The model set consists of three parts:

- Part 1 Skull Preparation
- Part 2 The Petrous Part Of The Temporal Bone
- Part 3 The Auditory And Vestibular Apparatus