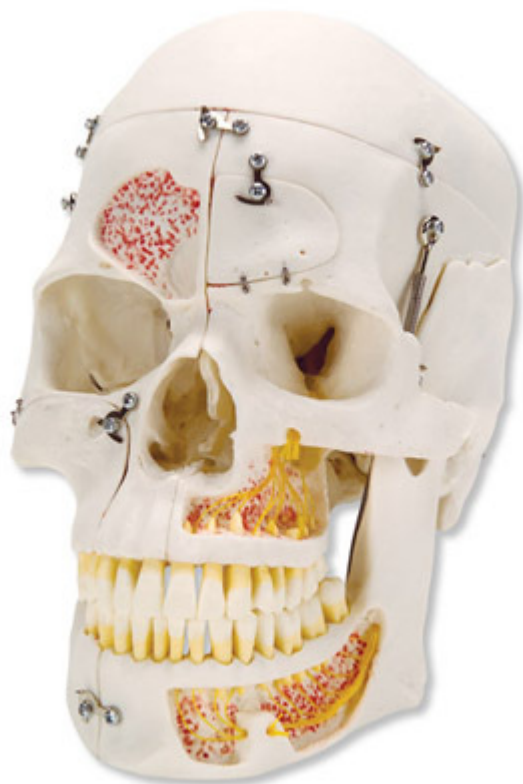


**A27 - Deluxe Human Demonstration  
Dental Skull Model, 10 part**  
Order code: **4004.1000059**



Cena bez DPH

1.171,00 Eur

Price with VAT

1.416,91 Eur

Parameters

Quantitative unit

ks

This replica of the human skull is one of exceptional quality and anatomical detail. The skullcap is removable and the base of skull is mid-sagittally divided. The skull model features a frontal sinus, perpendicular lamina and vomer that are fitted with flaps which can be opened to view the lateral nose wall and sphenoidal sinus. On the left half, the temporal bone can be removed and folded up in the area of the tympanic membrane. Maxilla and mandible of the skull are opened to reveal the alveolar nerves. On the right side the temporal bone is opened to reveal the sigmoid sinus, the facial nerve canal and the semicircular ducts. Additional flaps on the skull are located at the maxillary sinus and the right half of the mandible, so that the dental roots of the premolars and molars of the lower jaw can also be viewed. The natural occlusion and the individual removal and replacement of each tooth also make this skull especially interesting for dentists. This is a spectacular model whether you use it as a dental skull or for other purposes. The anatomy of the human skull is easy to learn and teach using this model.