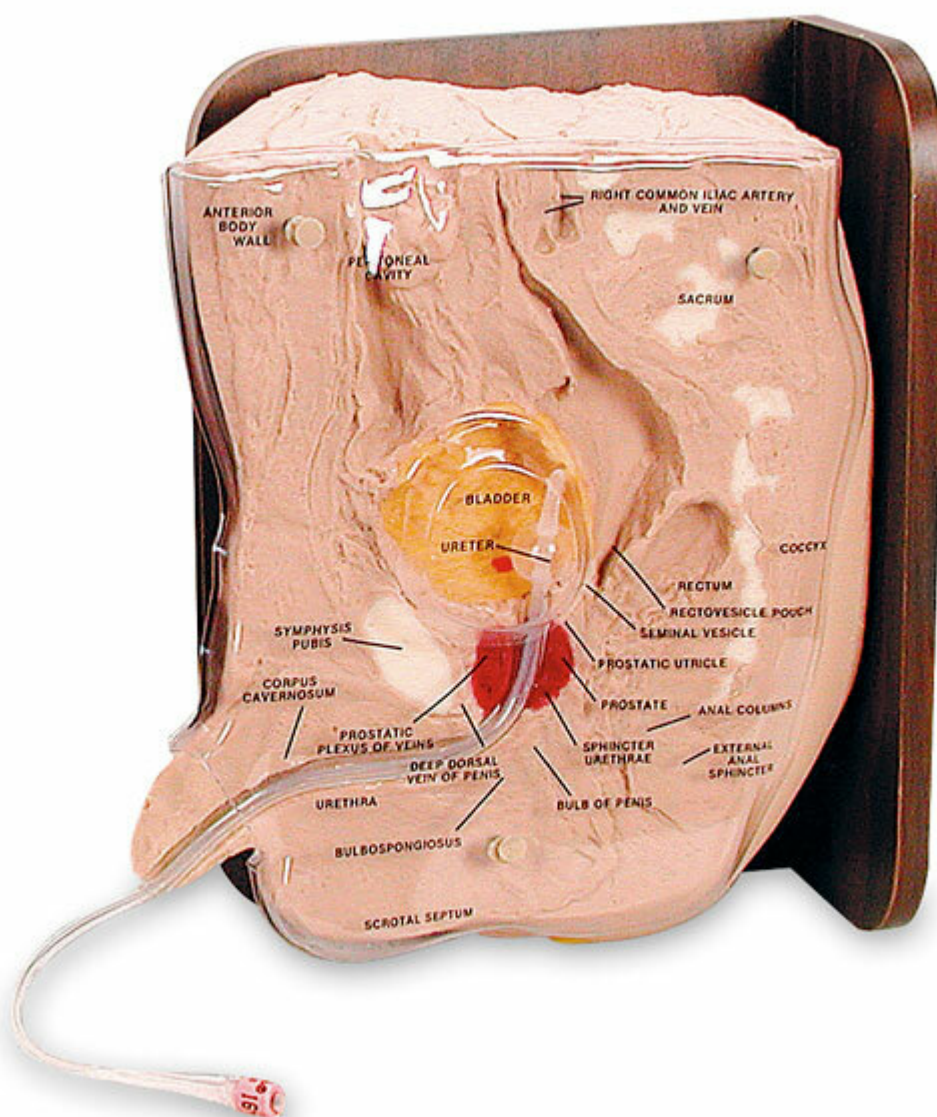


LF01025 - Male Cath-Ed Simulator

Order code: **4107.LF01025**



Cena bez DPH

1.447,00 Eur

Price with VAT

1.750,87 Eur

Parameters

Quantitative unit

ks

These unique Life/form® simulators combine visual and tactile learning sensations of catheterization in one compact unit. The mid-sagittal dissections allow detailed study of the internal anatomy and provide students an opportunity to follow what happens when they catheterize a patient. The removable plastic cover identifies key anatomical structures. With practice on Cath-Ed 1 Male Simulator, normal restrictions at

the bulbous urethra and bladder sphincter can be detected and identified. The Cath-Ed 2 provides practice in female catheterization. The vulva has been molded intact to facilitate identifying the urethra and proper spreading of the labia. A functional bladder has been incorporated to allow simulated urine to flow when the catheter is inserted properly. A Foley catheter can be demonstrated and seen through the viewing port. Three-year warranty. NOTE: Dover Products was the original sponsor for these products.

Includes a hard carrying case, lubricant, one catheter, 50 cc bulb, syringe, and instruction manual. This simulator does not have a functional bladder. Size: 15" x 14" x 8" (38 x 36 x 20 cm). Sh. wt. 15 lbs. (6.80 kg).