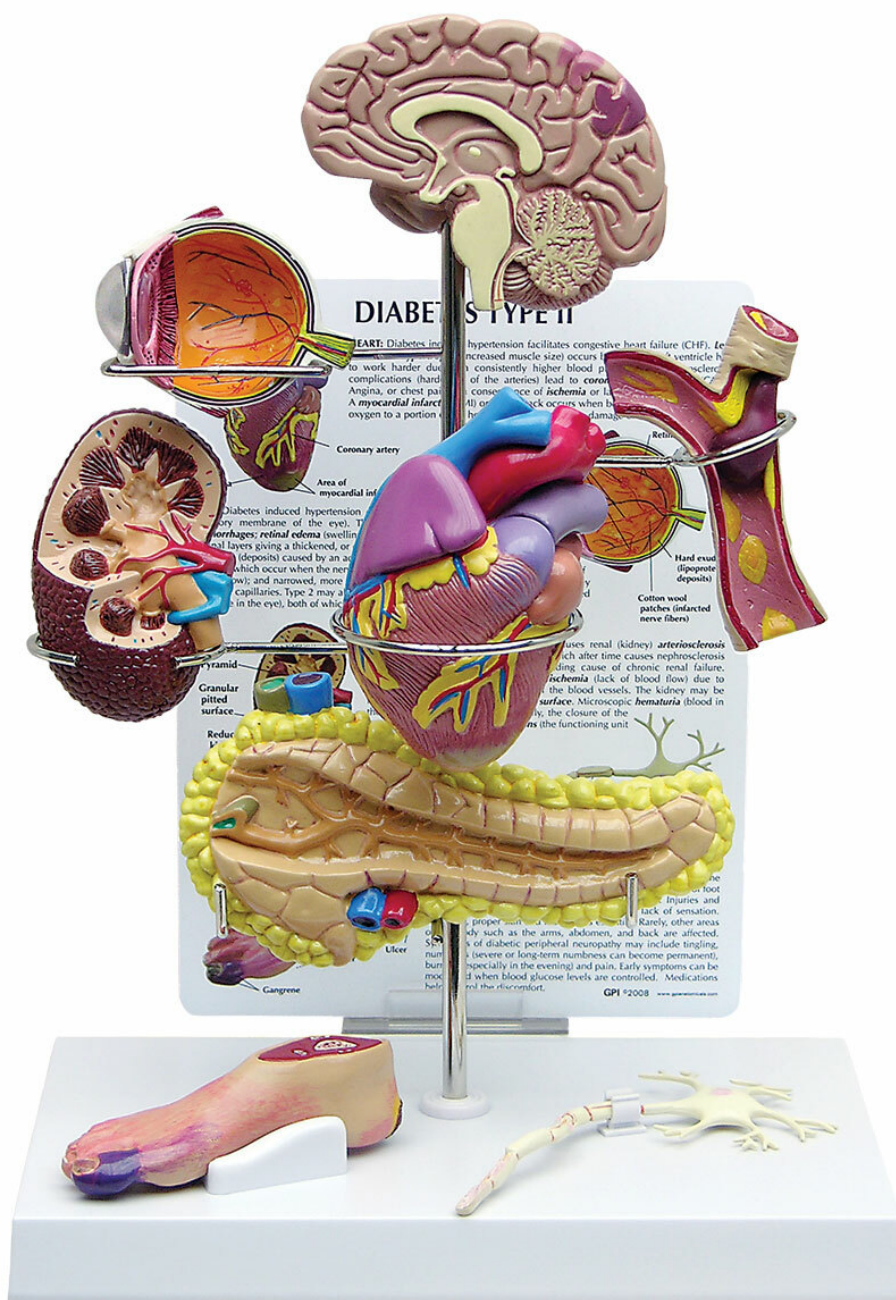


W33386 - Type II Diabetes Set

Order code: **4004.1019573**



Cena bez DPH

216,00 Eur

Price with VAT

261,36 Eur

Parameters

Quantitative unit

ks

The Type II Diabetes Set includes miniature brain, eye, heart, kidney, artery, pancreas, neuron, and foot models. Education card illustrates effects associated with Type II Diabetes: stroke, ocular pathology, hypertensive heart disease, hardening of the kidney, hardening of the arteries, insulin resistance, neuropathy, and foot ulcerations. Model display stands 10" tall. Models are reduced size.