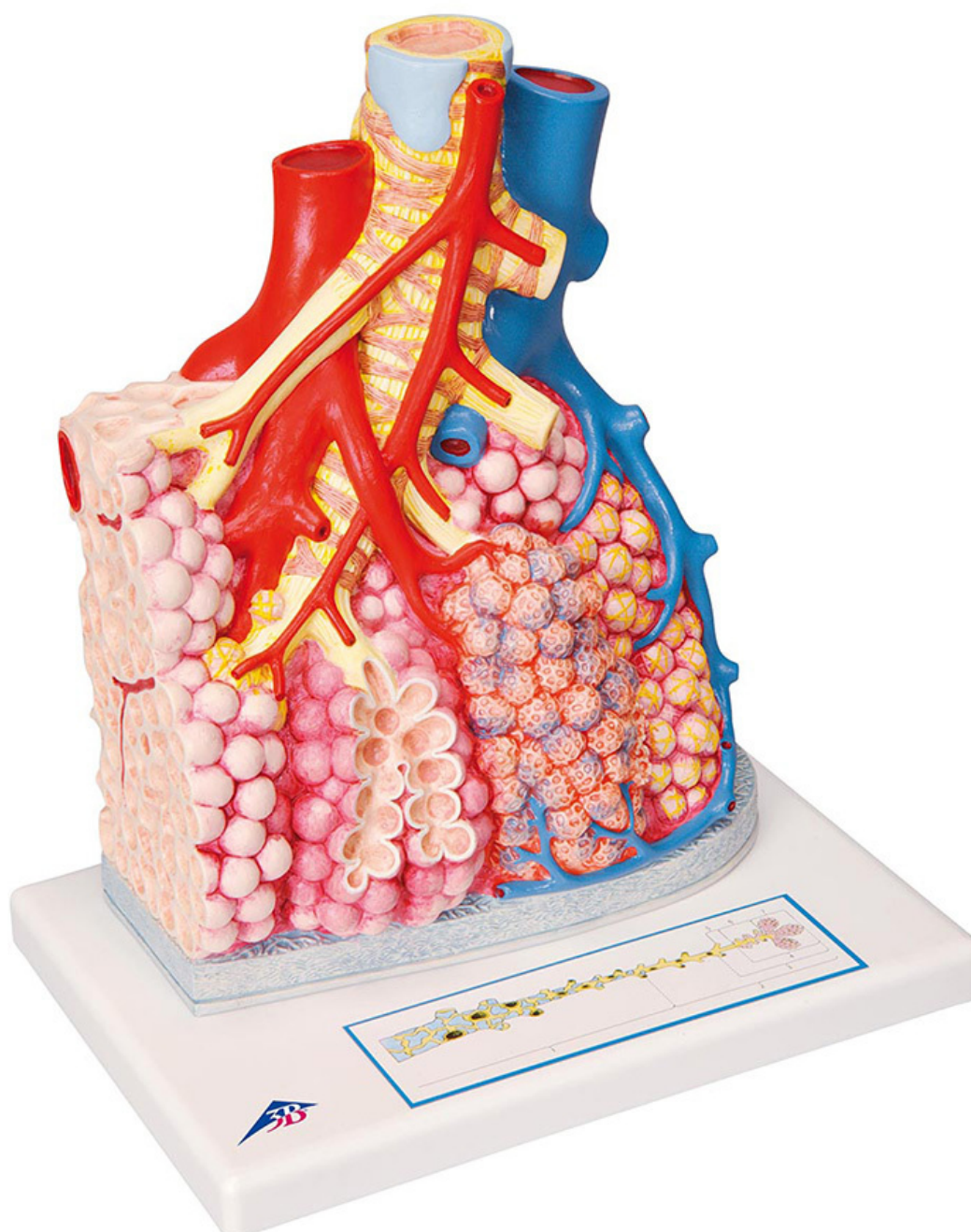


## **G60 - Pulmonary Lobule with Surrounding Blood Vessels**

Order code: **4004.1008493**



Cena bez DPH

279,00 Eur

Price with VAT

337,59 Eur

Parameters

The model shows an external pulmonary lobe with a magnification of 130x.

**The following are represented:**

- Segmental bronchus and its terminal branches (bronchioles)
- Alveolus opened on the right side
- Pulmonary vessels and their capillary networks
- Branch of a bronchial artery
- Pulmonary pleura
- Connective tissue septum on the left side
- Single opened alveolus with surrounding capillary network with a magnification of approx. 1000x on the rear side

A graphic image on the stand of the model shows the structure of the air way in the lungs up to the alveolus.