



HELAGO-CZ, s.r.o.
Commercial Register maintained by the Regional Court in Hradec Králové
Section C, File 17879
Kladská 1082
500 03 Hradec Králové 3
Company ID: 25 96 39 61, VAT: CZ 25963961
Phone: 495 220 229, 495 220 394
Fax: 495 220 154
GSM gate: 602 123 096
E-mail: info@helago-cz.cz
Web: <http://www.helago-cz.cz>

UNIMAT ML Technics

Order code: **5101.160200EDUB**



Information about product price on demand

Parameters

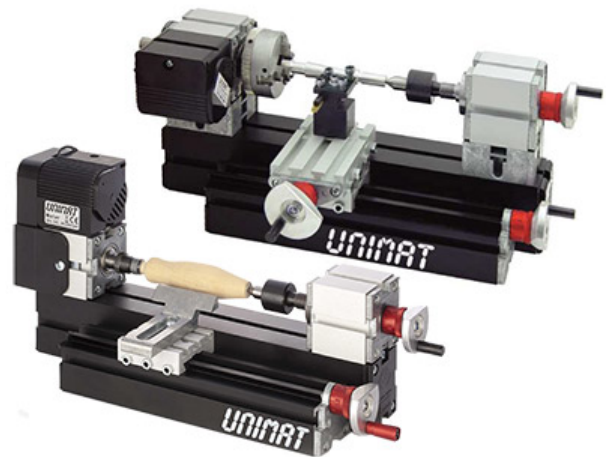
Educational kits

Quantitative unit

Machine set

ks

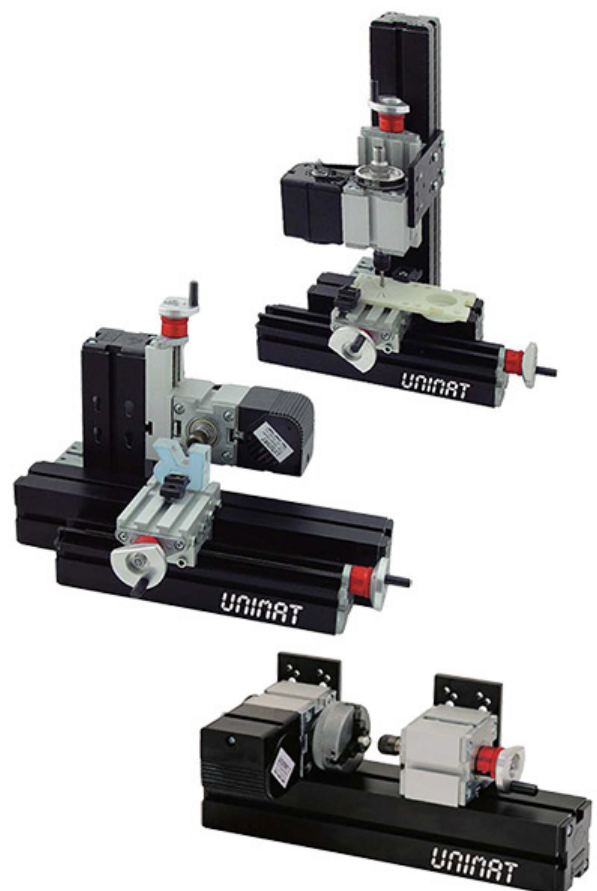
Includes all parts in full-metal construction to build one out of these machines: metal lathe, horizontal milling machine, vertical drilling/milling machine, woodturning lathe, center drilling machine, jig saw, sanding machine, hand drill, hand sander.



Metal lathe

- 90 mm distance between centers
- swing over bed 50 mm
- 3-jaw chuck workpieces with diameter up to 56 mm (internal) and 65 mm (external)
- Z-axis 145 mm, X-axis 32 mm

Woodturning lathe



Vertical drilling machine

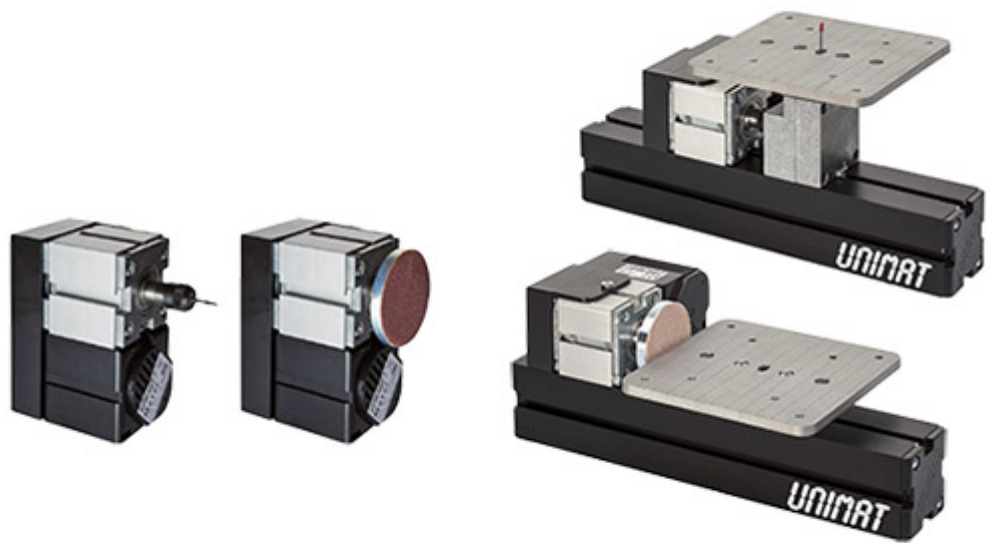
- X-axis 145 mm, Y and Z-axis 32 mm
- collets with clamping ranging from 1 do 6 mm

Horizontal milling machine

- X-axis 145 mm, Y and Z-axis 32 mm
- collets with clamping ranging from 1 to 6 mm

Center drilling machine

- with precision collets 1 to 6 mm, can be inserted into the tailstock
- tailstock allows precise stroke of 30 mm
- handwheel with scale 0,05 mm

Jig saw**Sander machine****Hand drill / sander**

- for drill bits 1 - 6 mm and grinding discs 50 mm