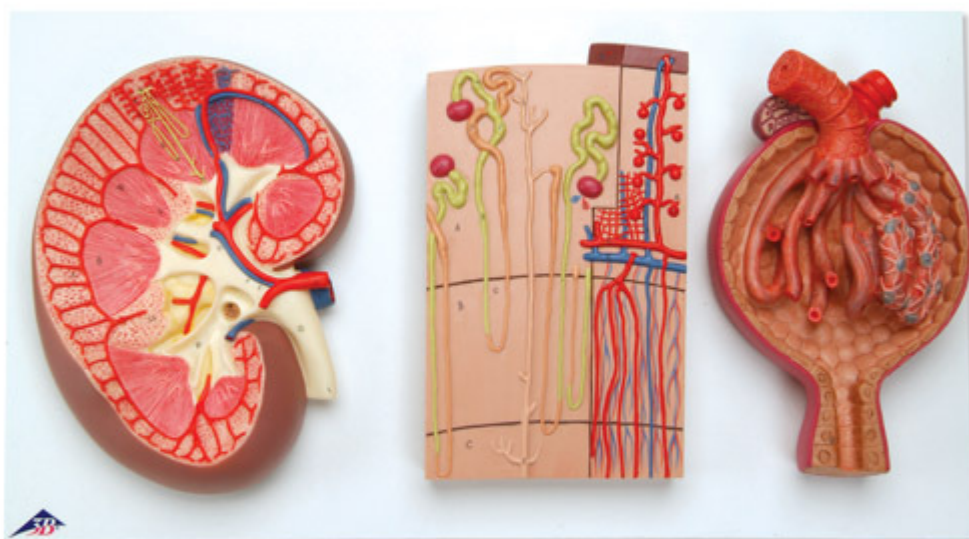


## K11 - Kidney Section, Nephrons, Blood Vessels and Renal Corpuscle

Order code: **4004.1000299**



Cena bez DPH

386,00 Eur

Price with VAT

467,06 Eur

Parameters

Quantitative unit

ks

These 3 kidney models create a complete series to study the anatomy of the kidney and the different structures of the kidney in great detail.

Together the human kidney models show:

- A longitudinal section of the right kidney, 3 times life-size
- A kidney nephron depicting a section through renal cortex and medulla. Nephron features the renal corpuscles with proximal and distal convoluted tubules, loops of Henle, collecting tubules and blood vessels, 120 times full-size
- The third kidney section shows an opened Malpighian corpuscle with glomerulus and Bowman's capsule, 700 times life-size of the

human kidney.

Mounted on one baseboard.

*Measurements: 29 × 52 × 9 cm*

*Weight: 2,5 kg*