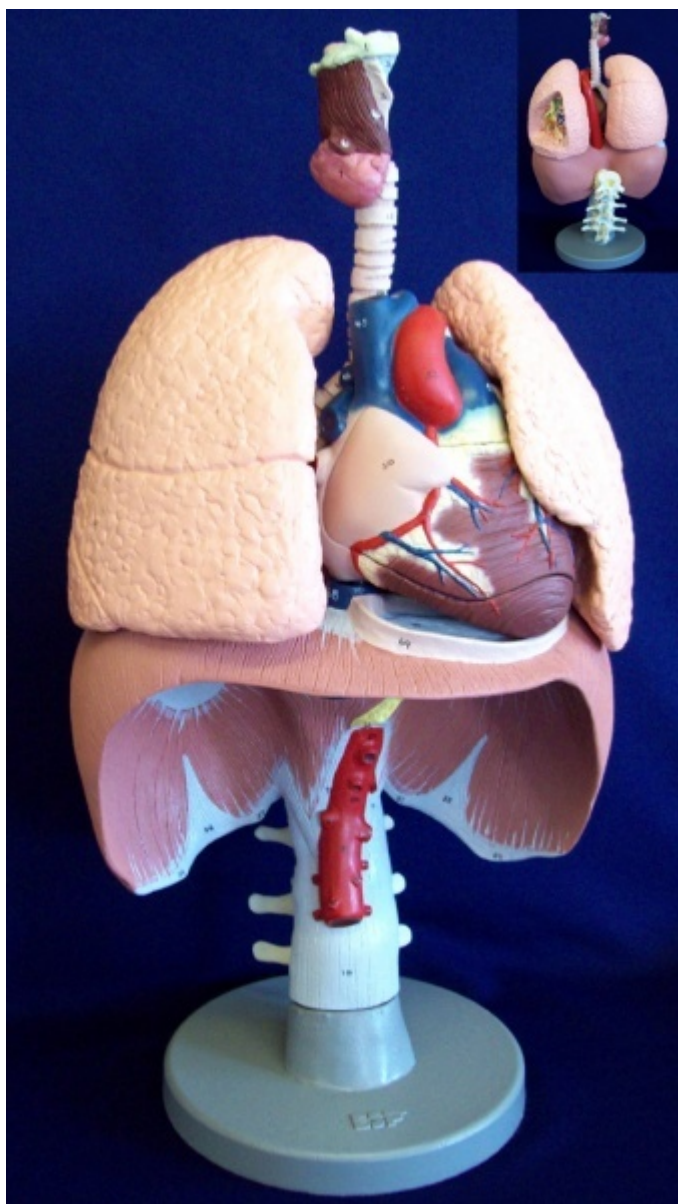


**Respiratory Organs**  
Order code: **4005.ZKJ649D**



Cena bez DPH

1.201,00 Eur

Price with VAT

1.453,21 Eur

Parameters

Quantitative unit

ks

A life size model in unbreakable material, finely coloured to show all major anatomical detail. The diaphragm shows muscles, tendons and openings for the major vessels and oesophagus. The aorta shows the origins of five abdominal arteries. Three thoracic and three lumbar vertebrae are shown. The left lung is sectioned to expose the bronchioles, pulmonary arteries and veins. The larynx is sectioned to show its detailed structure. The heart is bisectable to expose the atria and ventricles, and shows the superior and inferior vena cava, aorta,

pulmonary artery and the coronary sinus. Supplied complete on stand, size 41 × 23 × 19 cm.