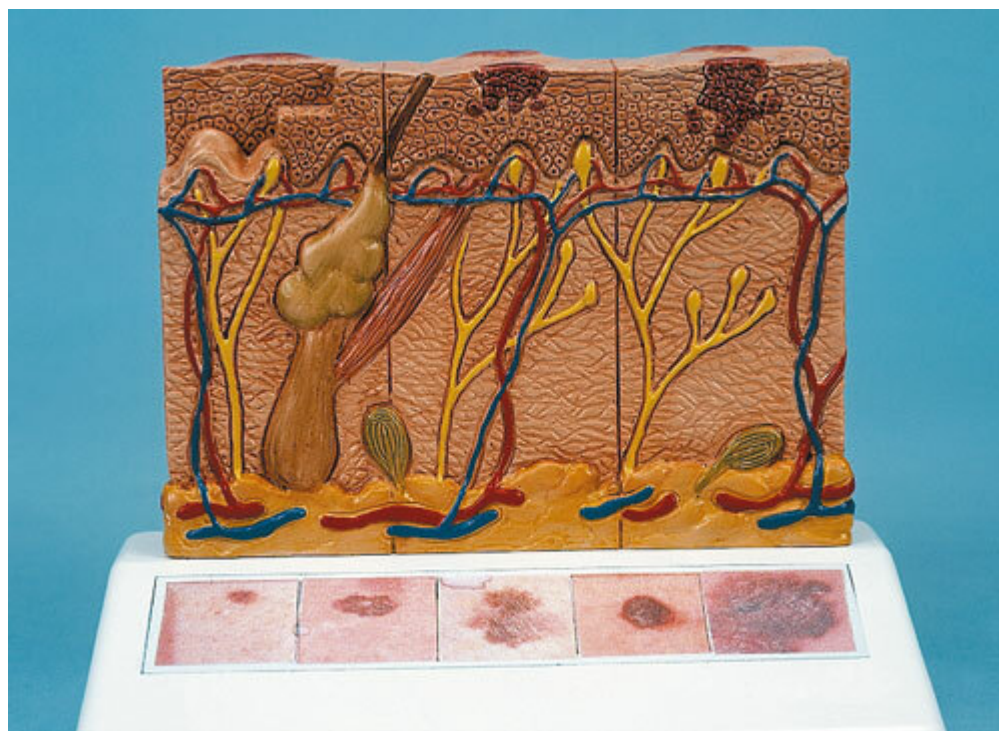


J15 - Skin Cancer Model

Order code: **4004.1000293**



Cena bez DPH

65,00 Eur

Price with VAT

78,65 Eur

Parameters

Quantitative unit

ks

This Pathology model shows 6 different stages of the malignant melanoma on the front and back, enlarged 8 times:

- Healthy
- Malignant cells are found at the surface, within the epidermis
- Malignant cells fill the epidermis, a few invade the papillary layer
- Malignant cells fill the papillary layer
- Malignant cells invade the reticular layer
- Malignant cells have reached the subcutaneous fatty tissue, satellite cells approach a vein

In the top view, the individual stages of externally visible skin changes are shown, allowing for an assessment according to the "ABCDE" criteria. The sides of the model show the various levels of invasion into the skin layers according to Clark (I-V) and the tumor thickness according to Breslow (in mm). 5 original colour illustrations on the base show various types of malignant melanomas. Mounted on a base.

Size: 14 × 10 × 11.5 cm

Weight: 200 g