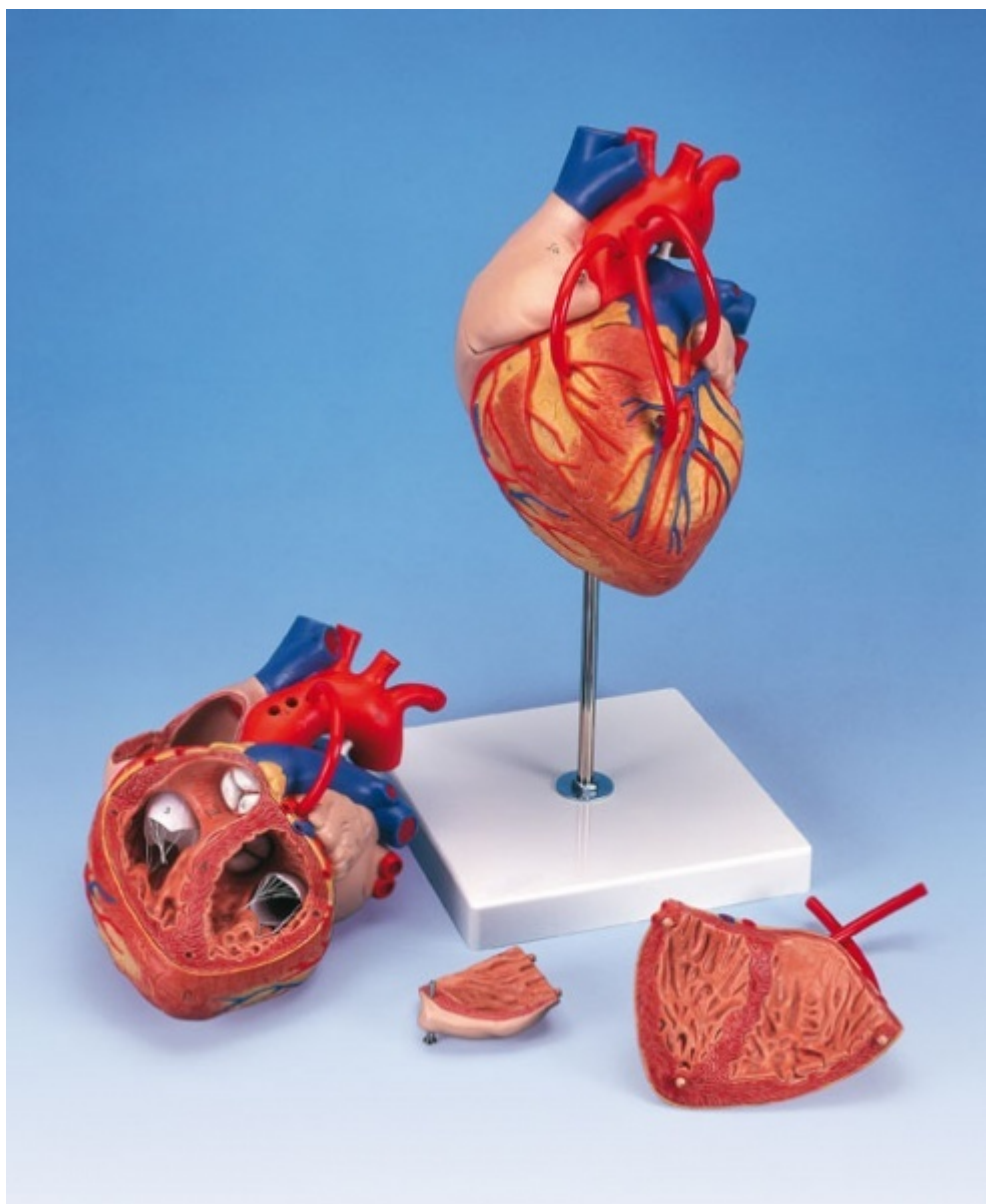


G06 - Heart model with Bypass

Order code: **4004.1000263**



Information about product price on demand

Parameters

Quantitative unit

ks

This 2-times life-size Heart allows a very easy identification of all structures and is a perfect aid for lessons in big classrooms or lecture halls. The anatomy of the human heart is shown in great detail with ventricles, atriums, valves, veins and the aorta. The front heart wall can be removed to reveal the chambers and valves inside. This model depicts a venal bypass to the rasmus postero-lateralis of the right coronary artery, to the rasmus interventricularis anterior of the left coronary artery with branching to the rasmus diagonalis as well as a bypass to the rasmus circumflexus of the left coronary artery. Additionally to the front heart wall also the right auricular appendix and the roof of the left-

hand atrium are removable. Comes with a removable base.

Size: 32 x 18 x 18 cm

Weight: 1100 g